

SCISSOR ARM DOOR CLOSERS

TS.9205



The Shard, London UK



SCISSOR ARM DOOR CLOSERS

TS.9205

Designed to last, the TS.9205 is a popular and highly efficient door closer with both optional back check and delayed action, and assisting BS8300.

- Power Adjustable EN2-5.
- 15 Finishes available for next day delivery, including an anti-corrosion Marine316.
- Slimline body & cover with only 40mm projection.
- EN2-5 parallel arm an optional using short parallel arm basket (Product Code: PAB.1)



3rd Party Certification



Opening Angle 180°



Two-Stage Speed Regulation



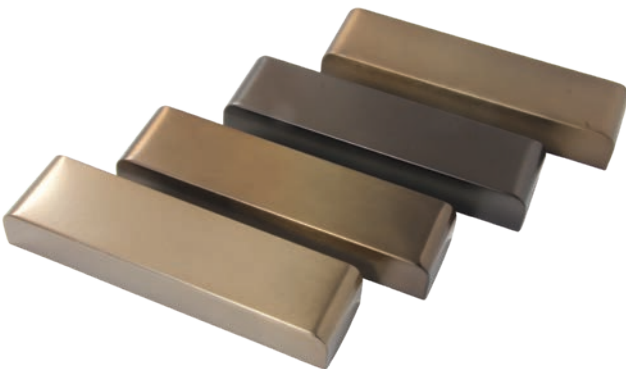
Guarantee



Max Door Width



Max Door Weight



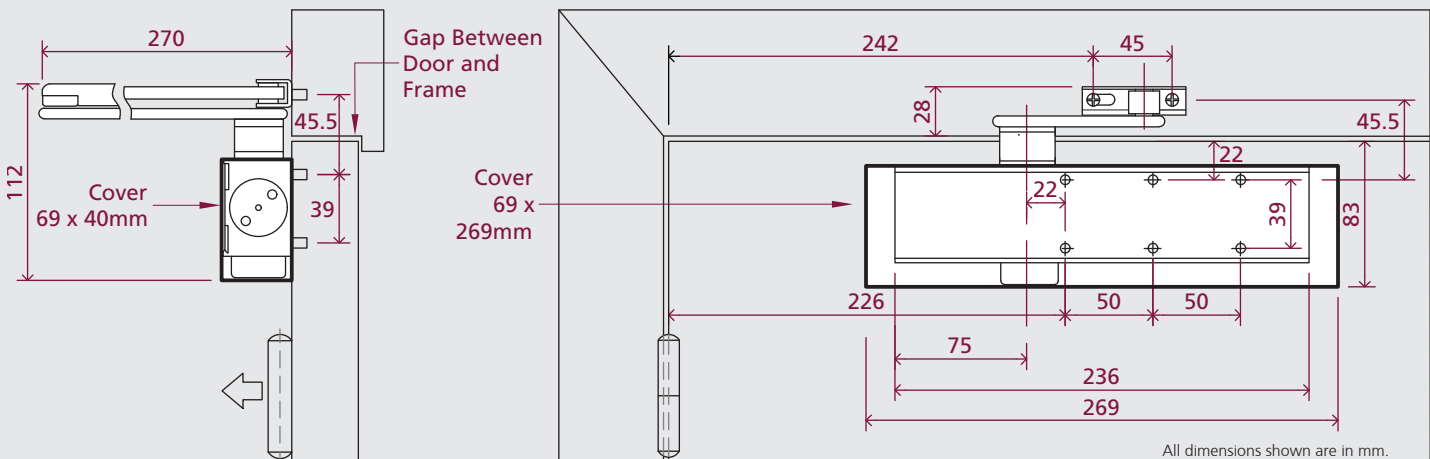
Finishes

See page 98 for more detail



Product Features	TS.9205
Delayed Action	✓
Back Check	✓
Opening Angle	180° (Fig 1)
Fig.1 Pull Side Door Width	390-1250mm
Fig.66 Push Side Door Width	390-1100mm
Fig.1 BS8300 Min Door Width	835mm
Fig.66 BS8300 Min Door Width	728mm
Max Door Weight	<110kg
Power Adjustment	By Spring
Hold Open (not for fire doors)	◦
Dimensions (including cover)	W269 x H69 x D40mm
Certification Compliance	
Certifire	✓
UKCA	✓
CE	✓
BS EN 1154	✓
BS EN 1634	✓
UL10C	✓
UL228	✓
ANSI BHMA	-
IFCC	✓
EPD 3.09E+01 kg CO ₂ eq	✓

Key: ✓ Yes - No ◦ Option



For fitting instructions see website