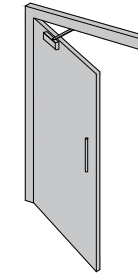




Concealed Closer Single Action ITS11205

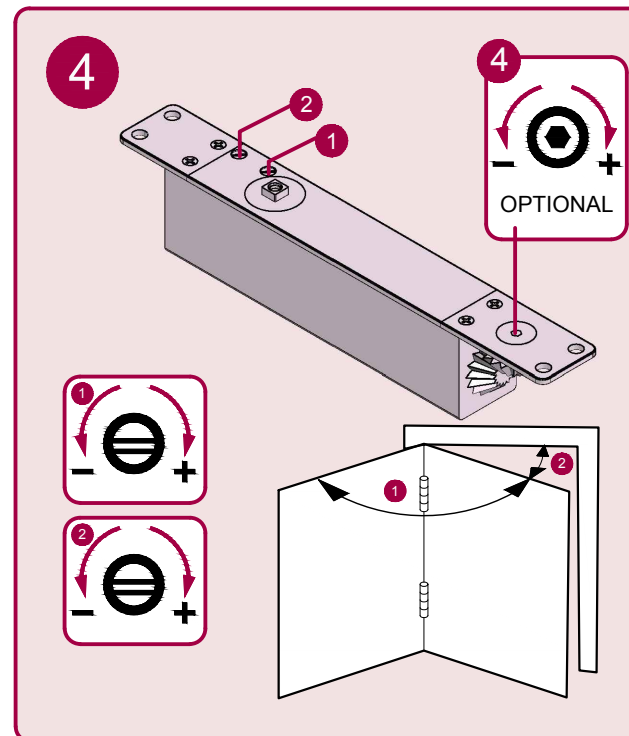
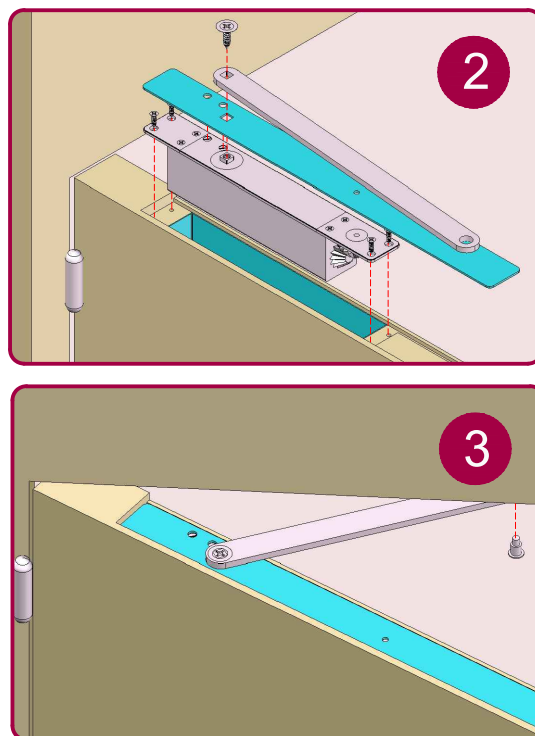
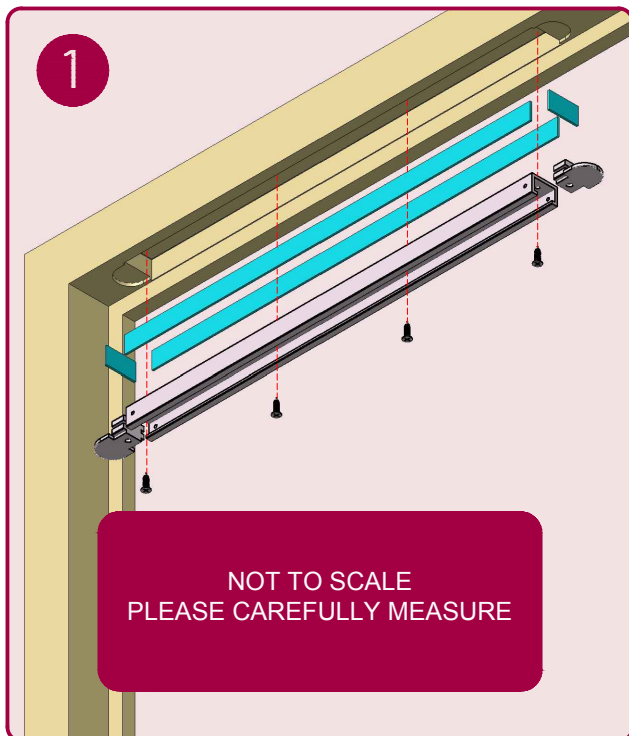
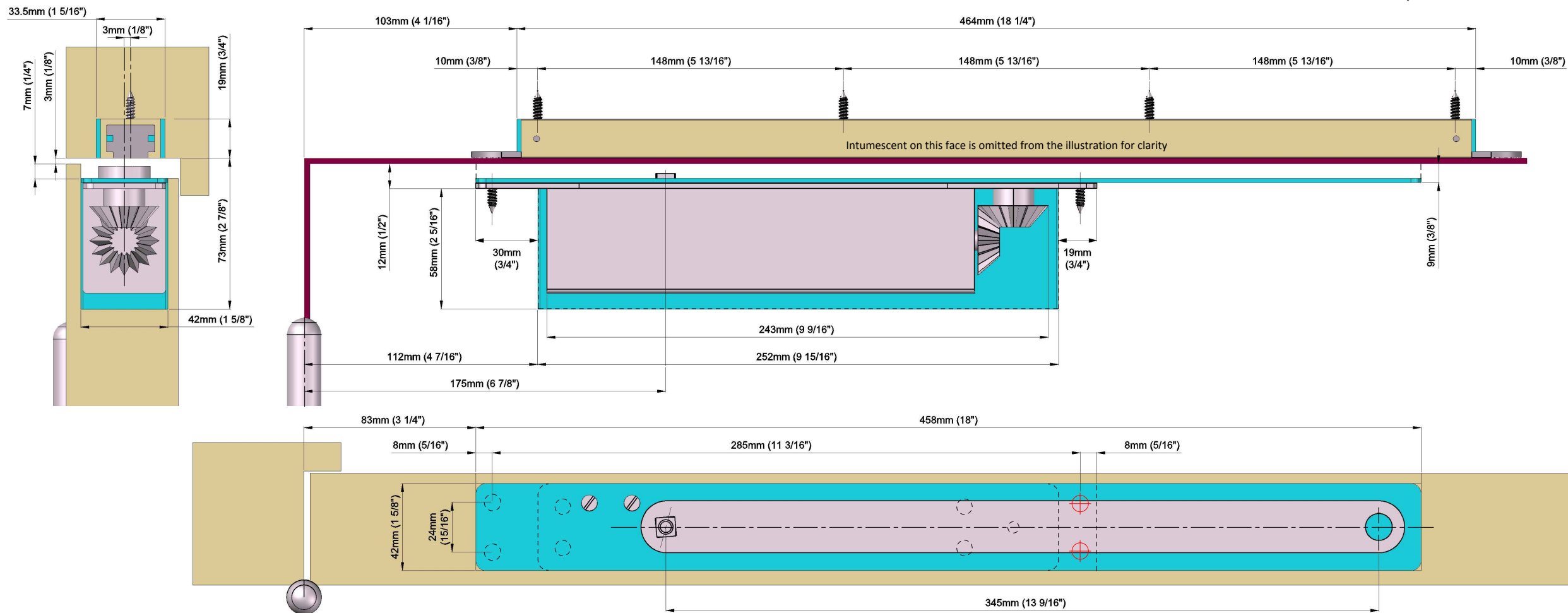
C300618

www.rutlanduk.co.uk



Fire Doors

Use in conjunction with the
IP.115 Intumescent kit +
Fitting Instruction



2-5 Door Closer adjustments

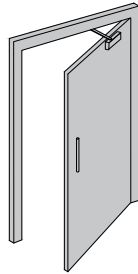
4				
No. of turns	Size	Max. door width	Max. opening angle	Max weight
-3	2	850mm	110°	45
*0	3	950mm	110°	60
+4	4	1100mm	110°	80
+7	5	1250mm	110°	100

* FACTORY PRE-SET
CE in size EN3-5 only

THE PINION BOLT MUST BE TIGHTENED TO 12NM
FIRE DOORS MUST BE FITTED WITH INTUMESCENT GASKETS

Fire Doors

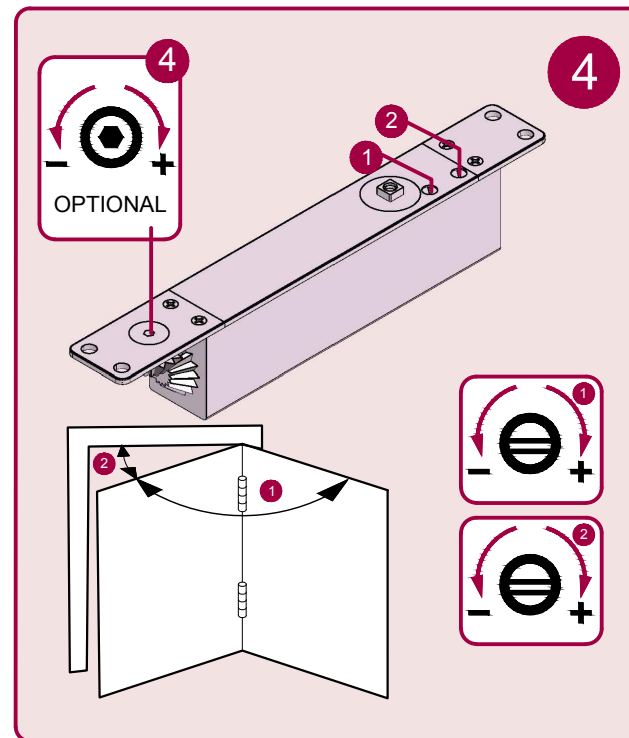
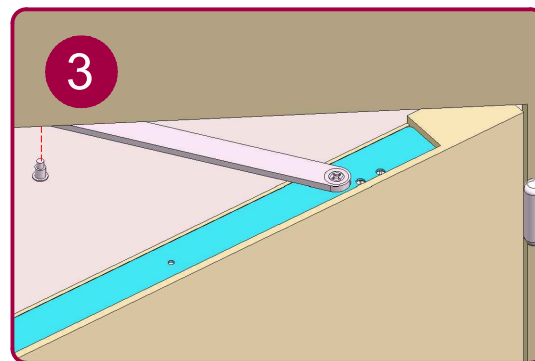
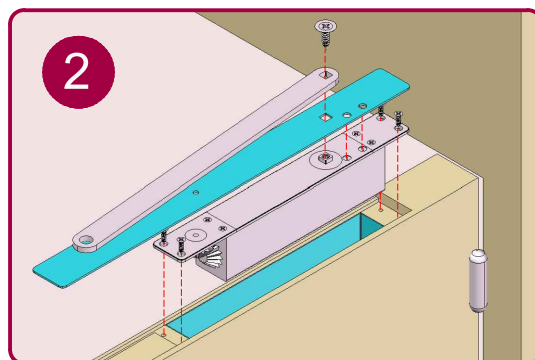
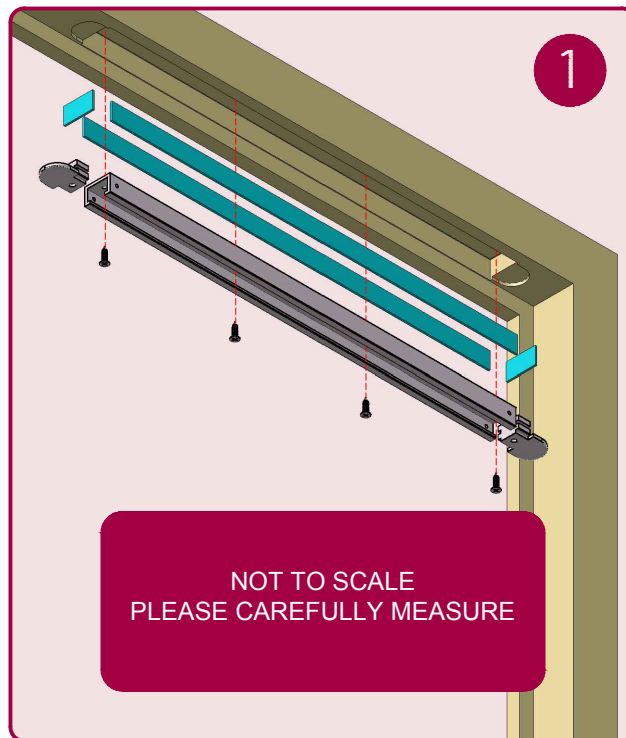
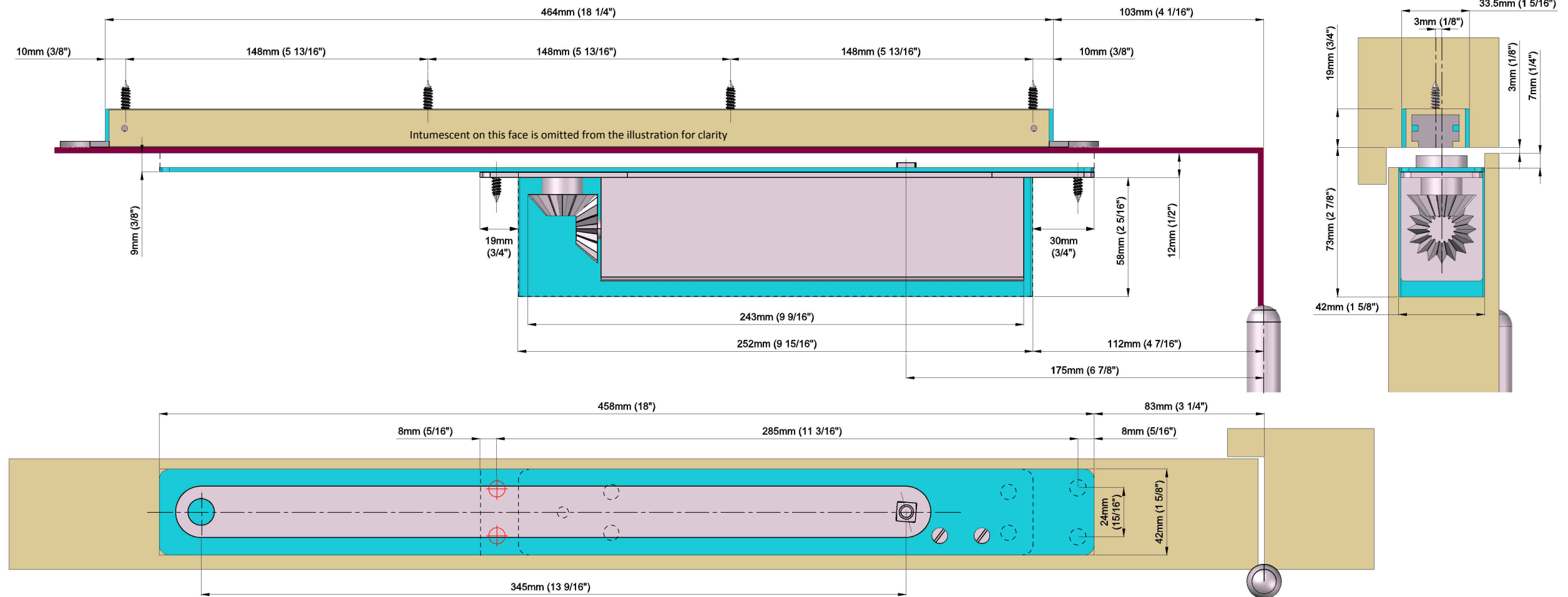
Use in conjunction with the IP.115 Intumescent kit + Fitting Instruction



Concealed Closer Single Action ITS11205

C300618

www.rutlanduk.co.uk



2-5 Door Closer adjustments

4	+	-	+	+
No. of turns	Size	Max. door width	Max. opening angle	Max weight
-3	2	850mm	110°	45
*0	3	950mm	110°	60
+4	4	1100mm	110°	80
+7	5	1250mm	110°	100

* FACTORY PRE-SET
CE in size EN3-5 only

THE PINION BOLT MUST BE TIGHTENED TO 12NM
FIRE DOORS MUST BE FITTED WITH INTUMESCENT GASKETS