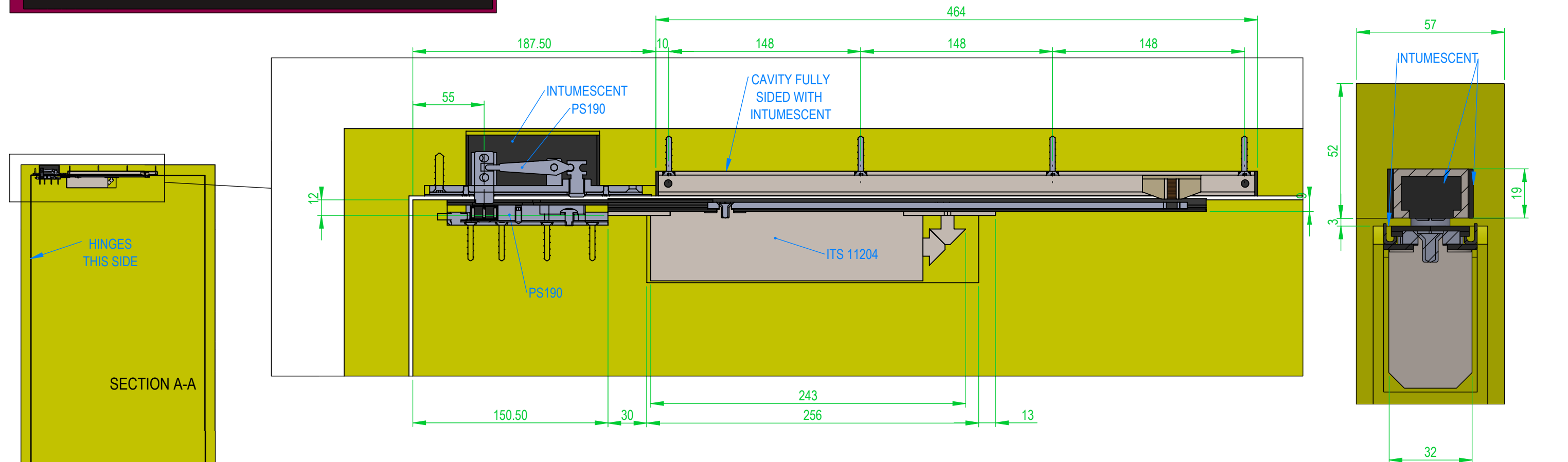




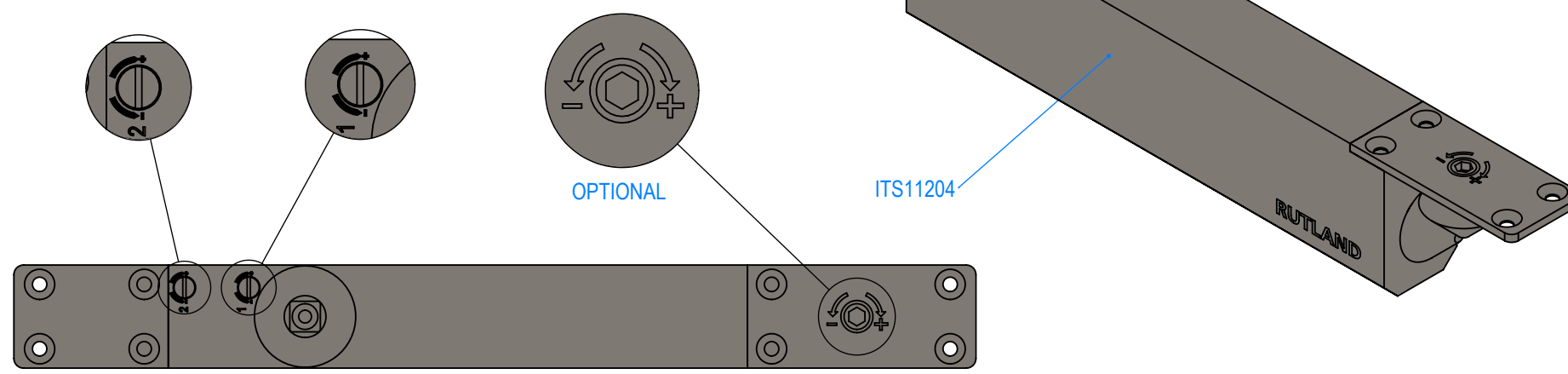
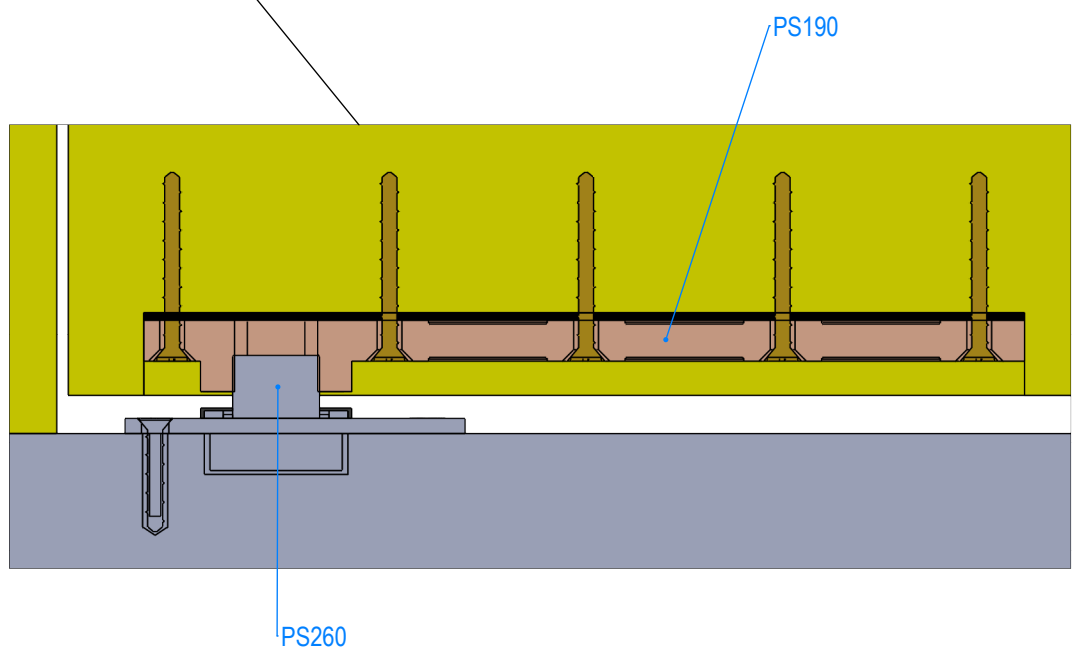
Concealed Closer Single Action
ITS11204 With PS.190 And PS.260



Size 2-4 Power Adjustment

No. of turns	Size	Max. door width	Max. opening angle	Max weight
-4	2'	850mm	110°	45
+0	3	950mm	110°	60
+6	4	1100mm	110°	80

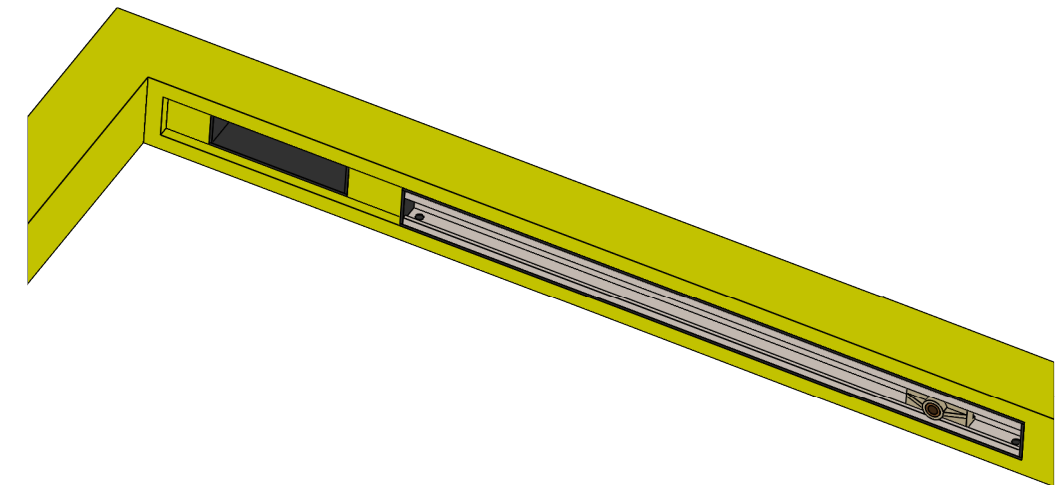
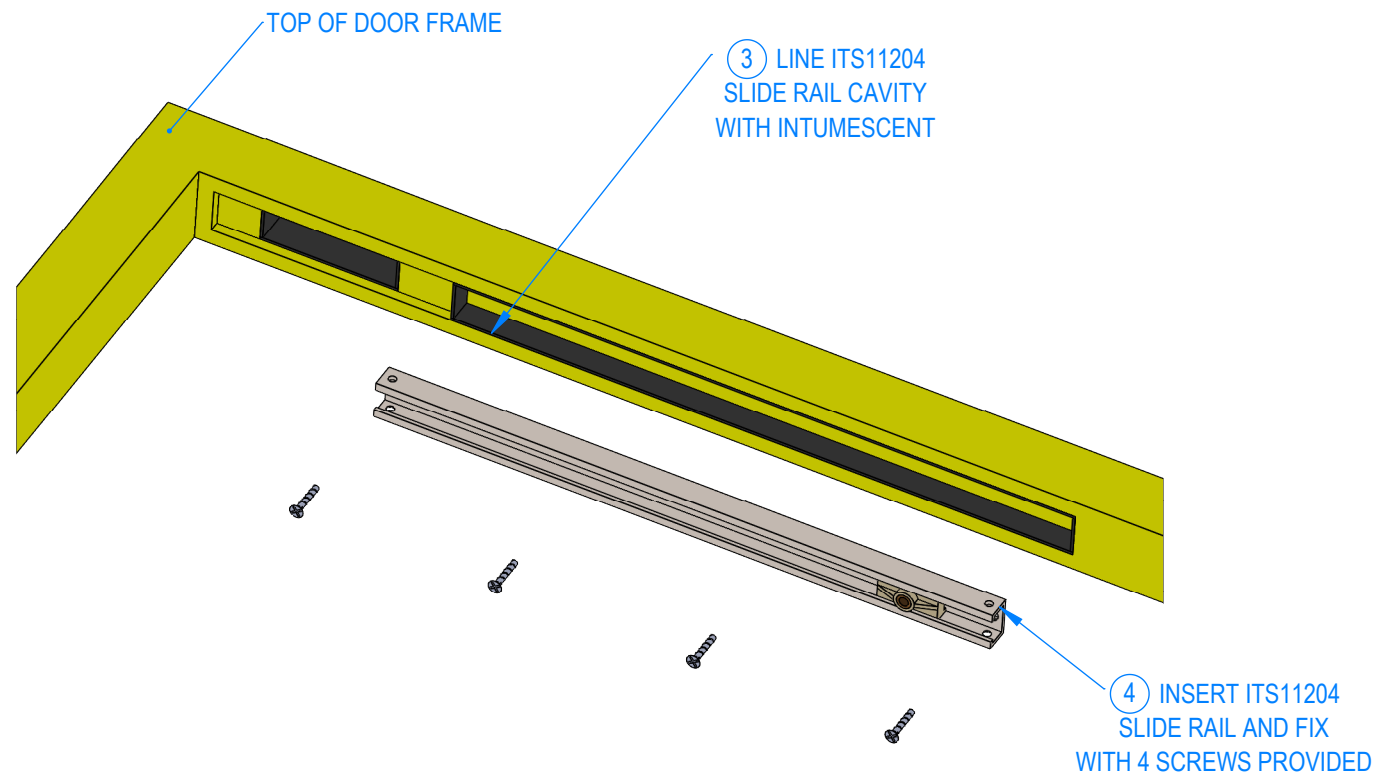
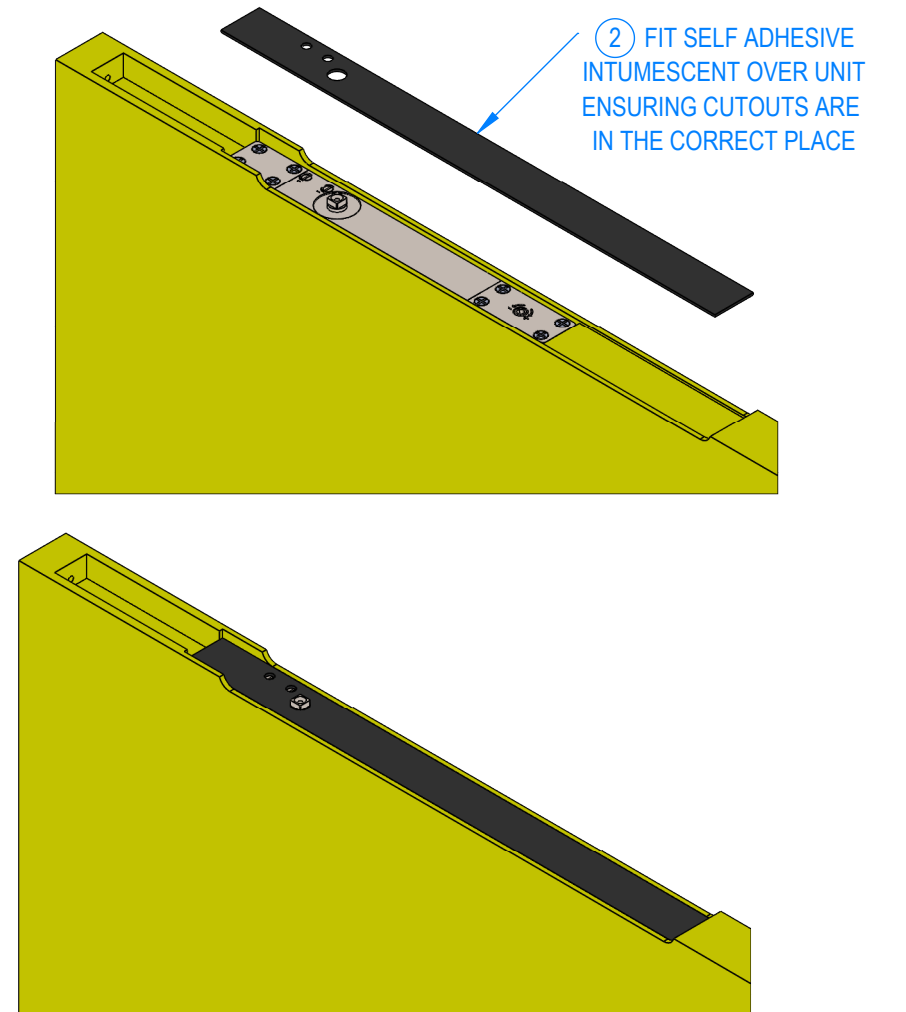
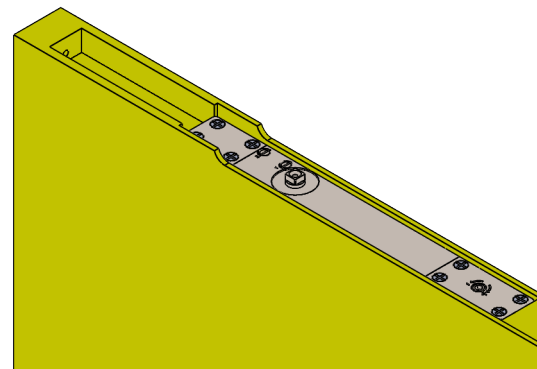
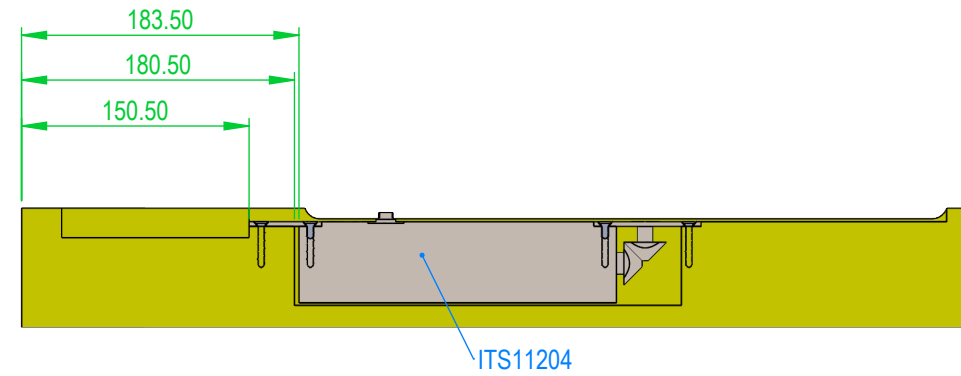
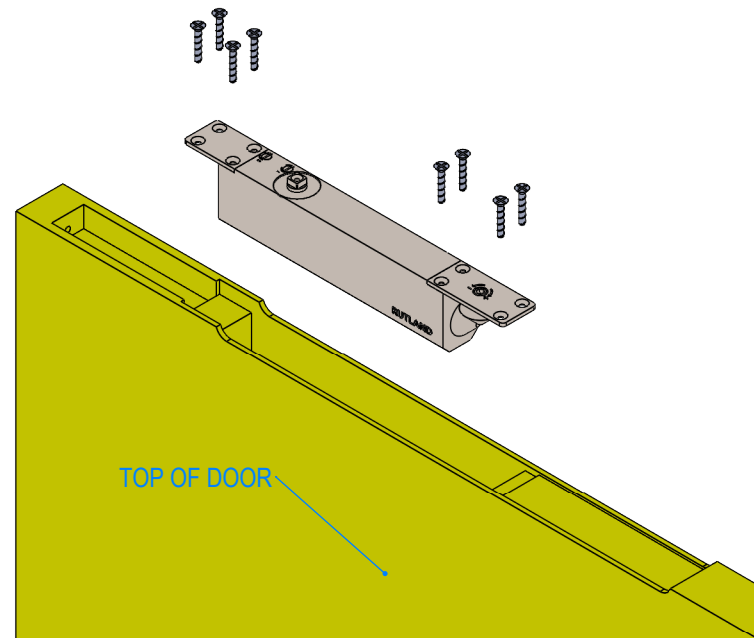
* FACTORY PRE-SET
■ NOT SUITABLE FOR FIRE DOORS





Concealed Closer Single Action
ITS11204 With PS.190 And PS.260

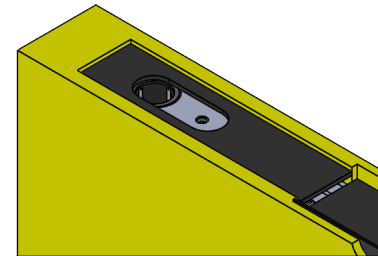
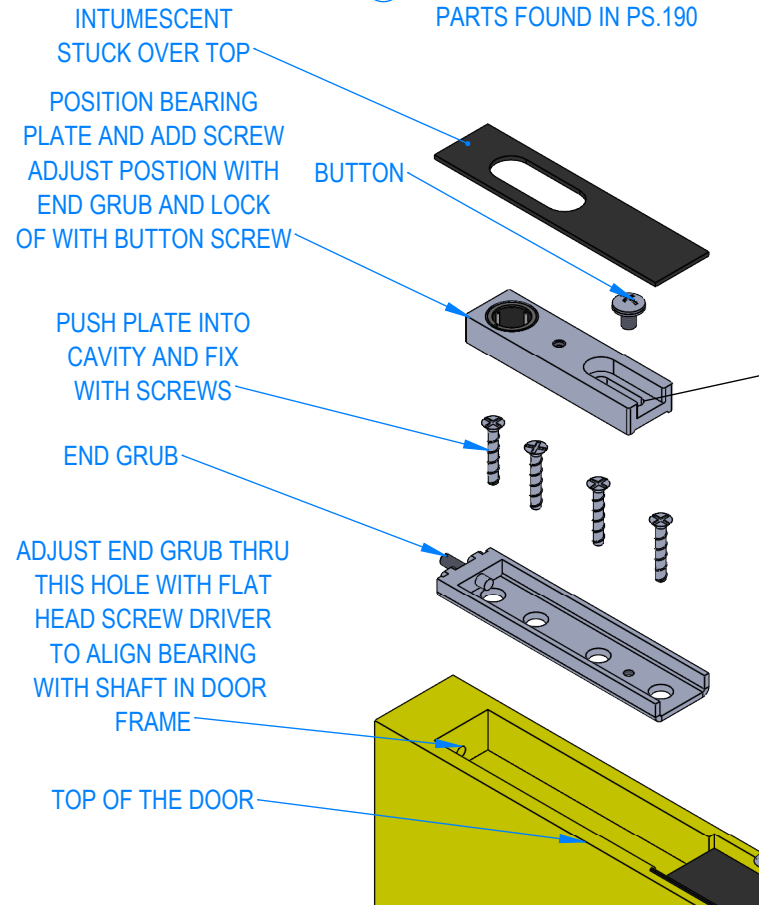
① FIT ITS11204 UNIT INTO TOP OF DOOR AS SHOWN
TO POSITION SHOWN AND SECURE WITH 4 SCREWS SUPPLIED
ENSURE IT IS CENTRALISED WITHIN THE DOOR



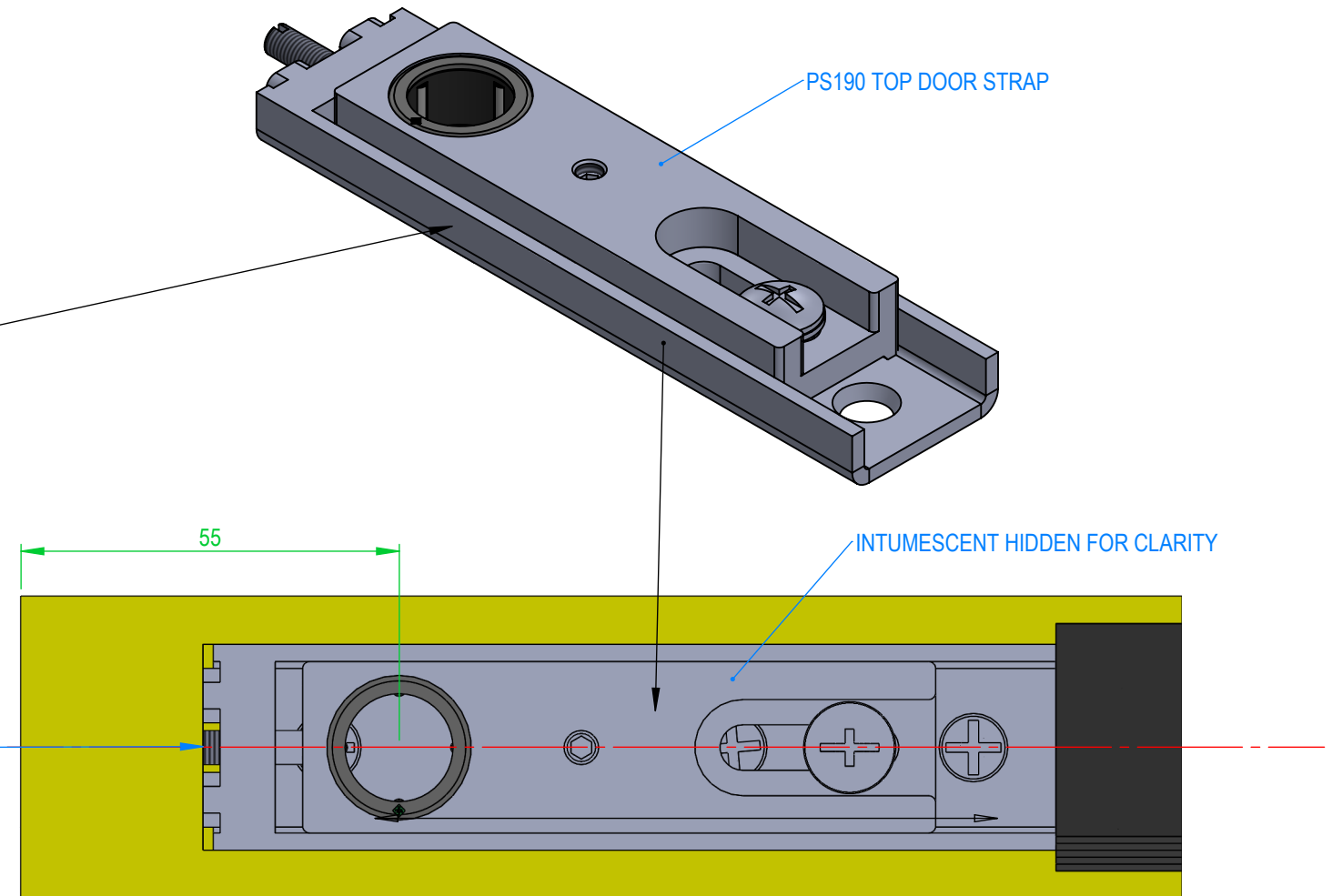


Concealed Closer Single Action
ITS11204 With PS.190 And PS.260

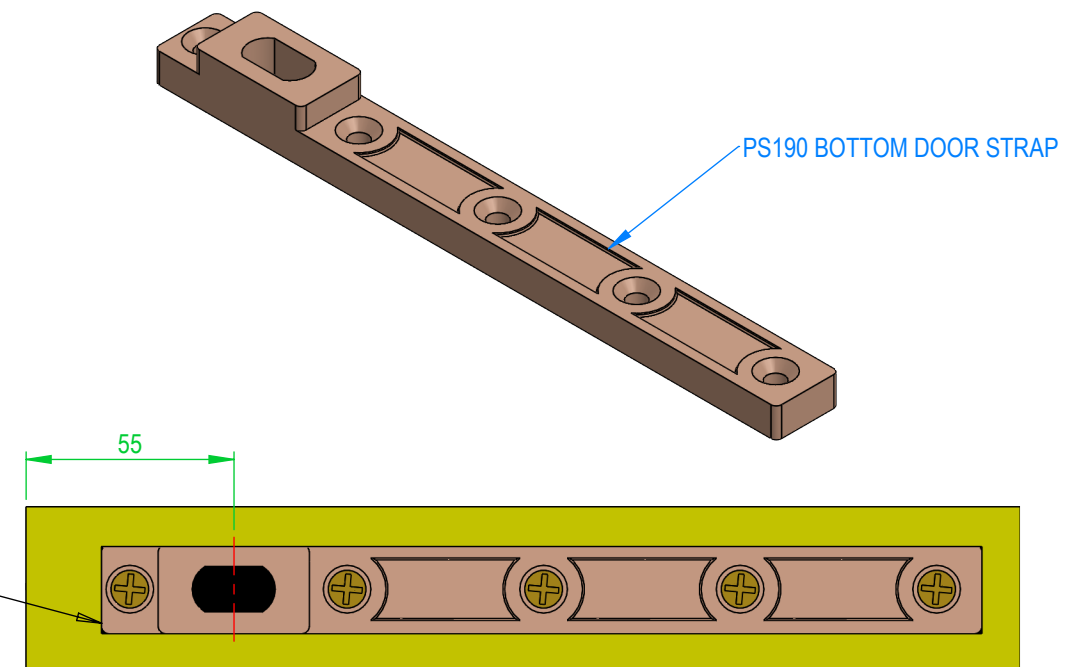
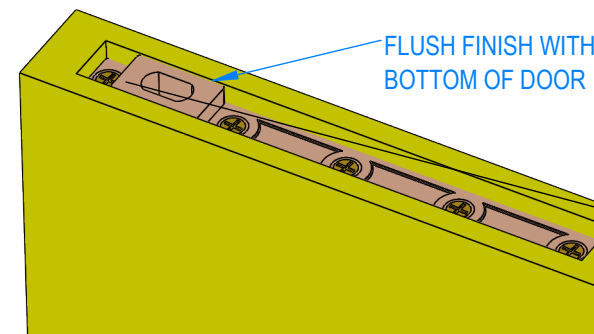
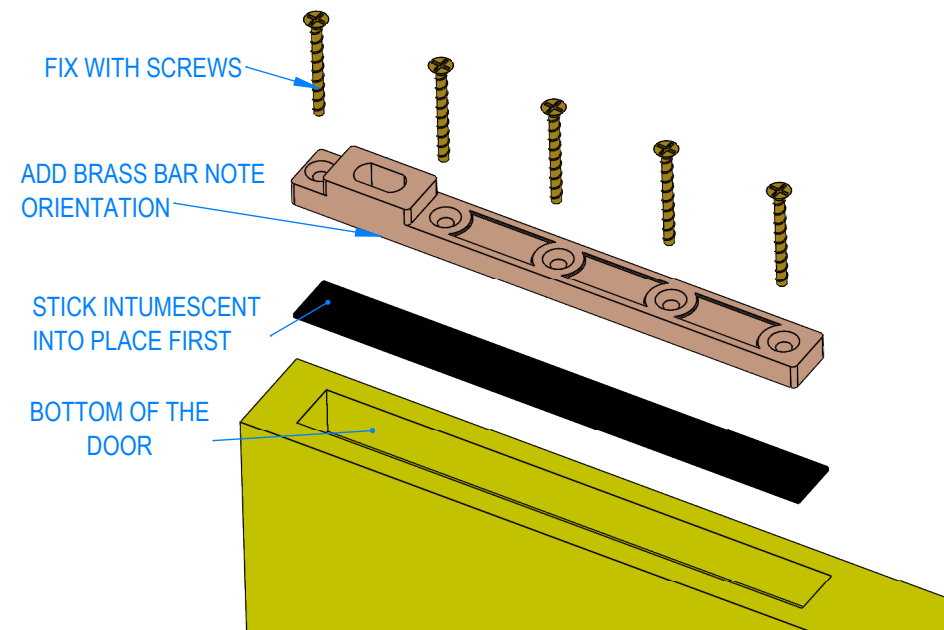
⑤ FITTING PARTS TO TOP OF DOOR
PARTS FOUND IN PS.190



SET ADJUSTMENT
USING FLAT HEAD
SCREW DRIVER
THRU HOLE IN TOP
OF DOOR



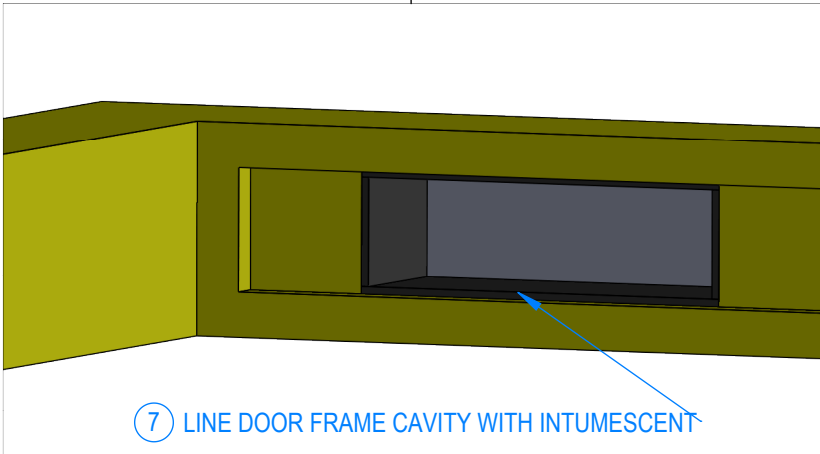
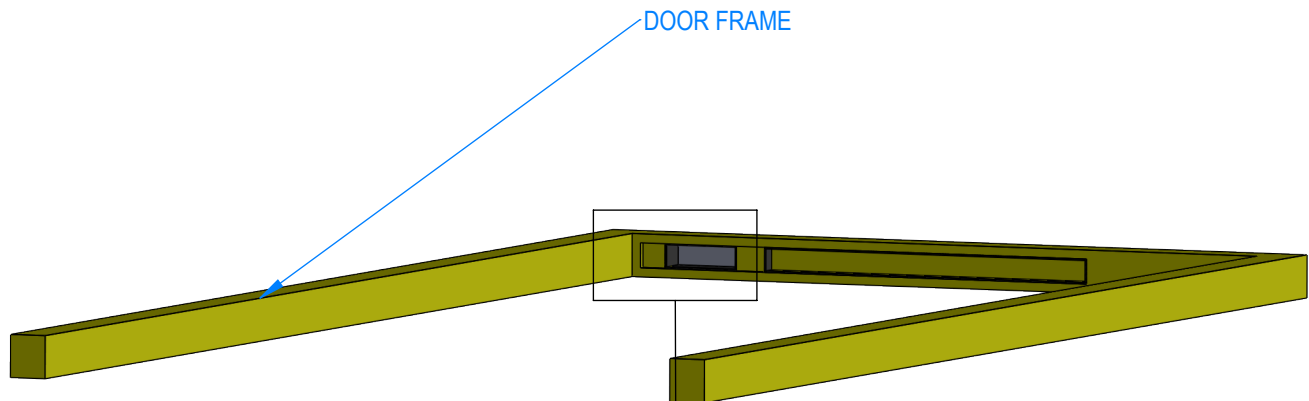
⑥ FITTING PARTS TO BOTTOM OF DOOR
PARTS FOUND IN PS.190 KIT AND IN
INUMESCENT PACK 12204





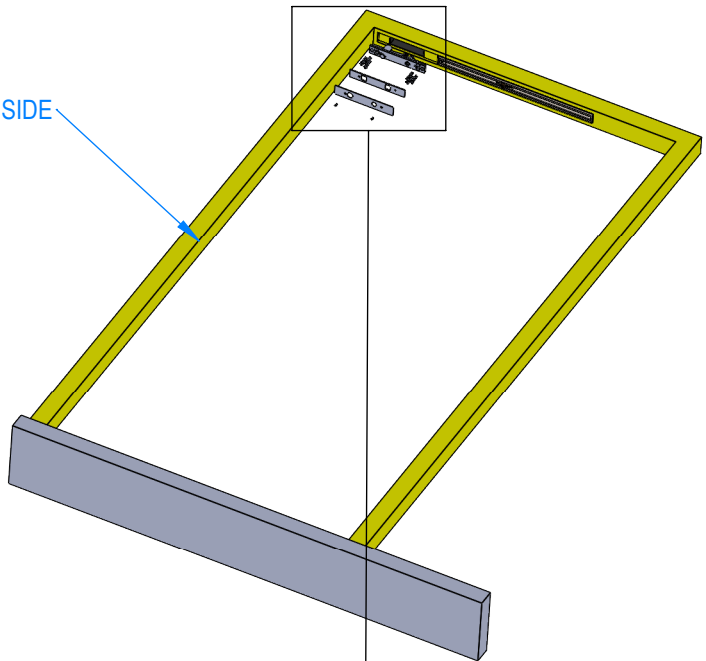
Concealed Closer Single Action
ITS11204 With PS.190 And PS.260

DOOR FRAME

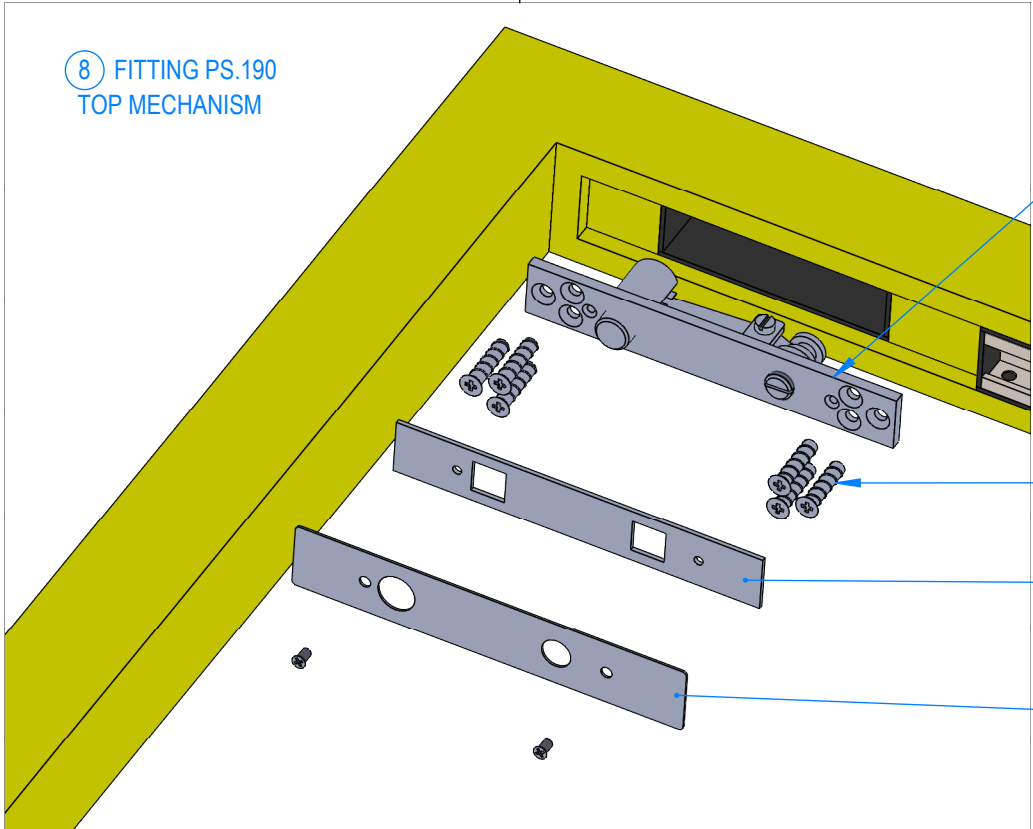


7 LINE DOOR FRAME CAVITY WITH INTUMESCENT

HINGE SIDE



8 FITTING PS.190
TOP MECHANISM



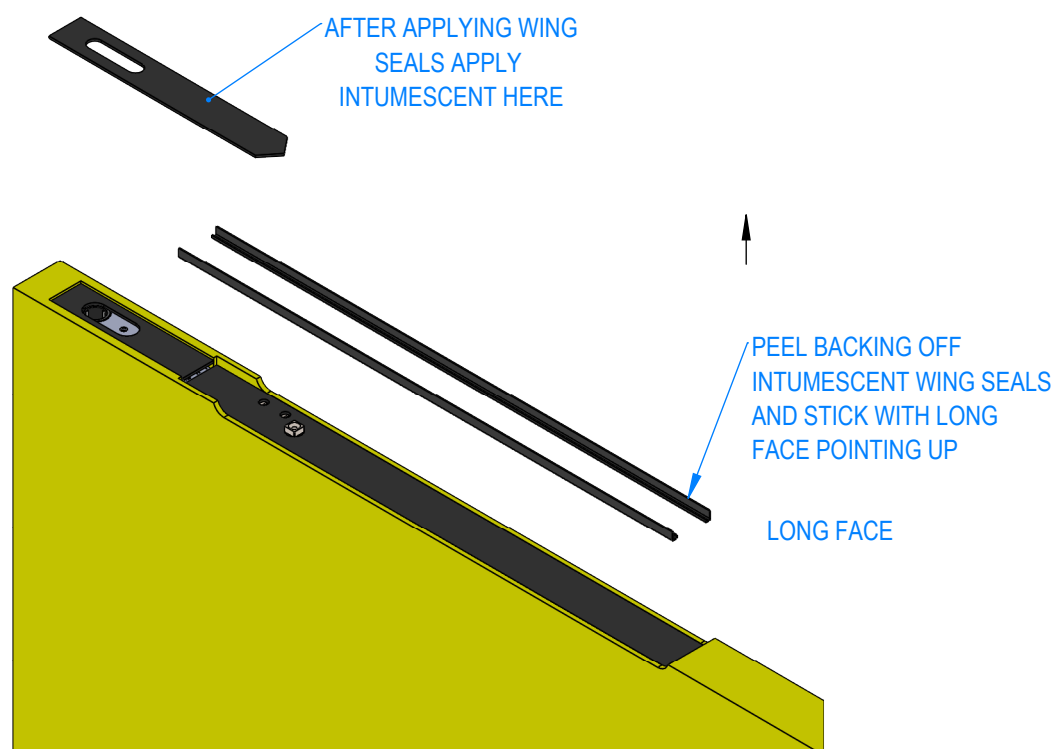
FIT PS.190 INTO
CAVITY

SECURE WITH
SCREWS

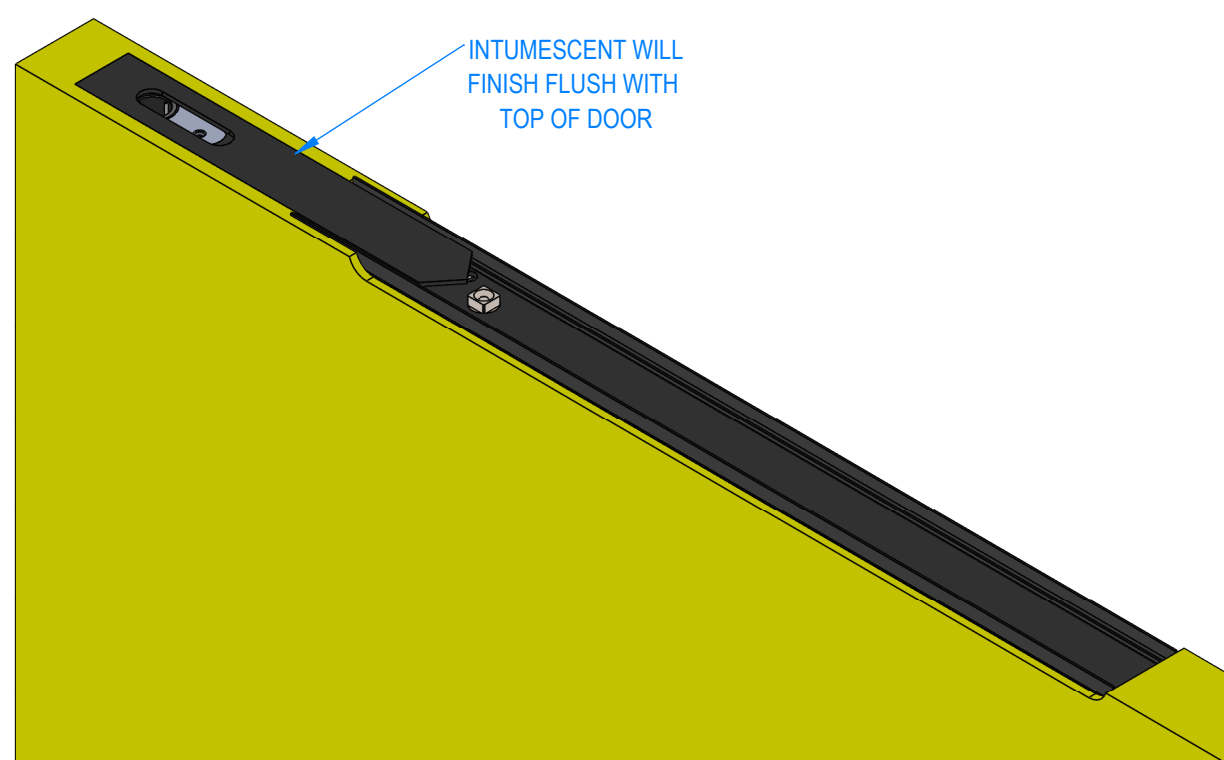
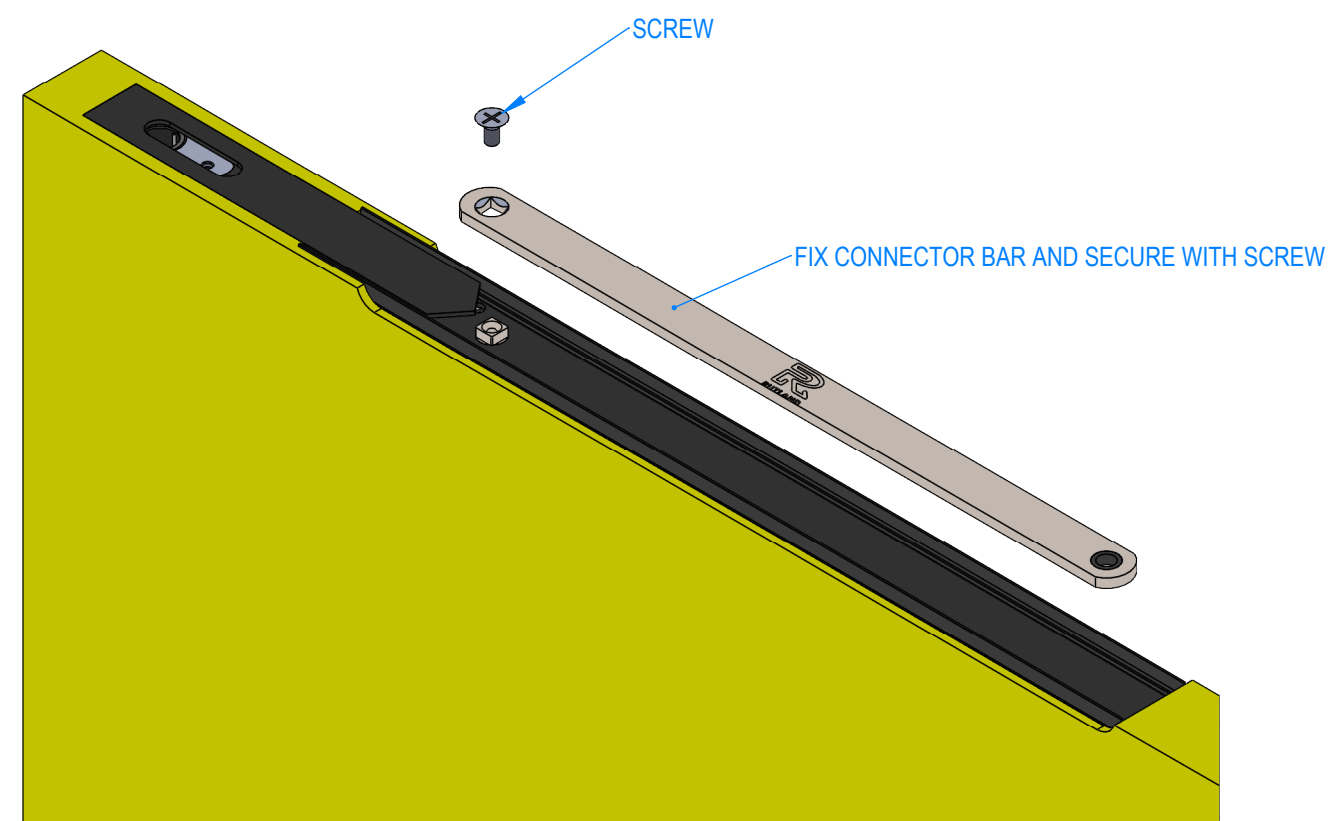
STICK
WHITE INTUMESCENT
OVER THE TOP

FIX METAL PLATE
OVER TOP
SECURING WITH SCREWS

⑨ FITTING INTUMESCENT AND WING SEALS



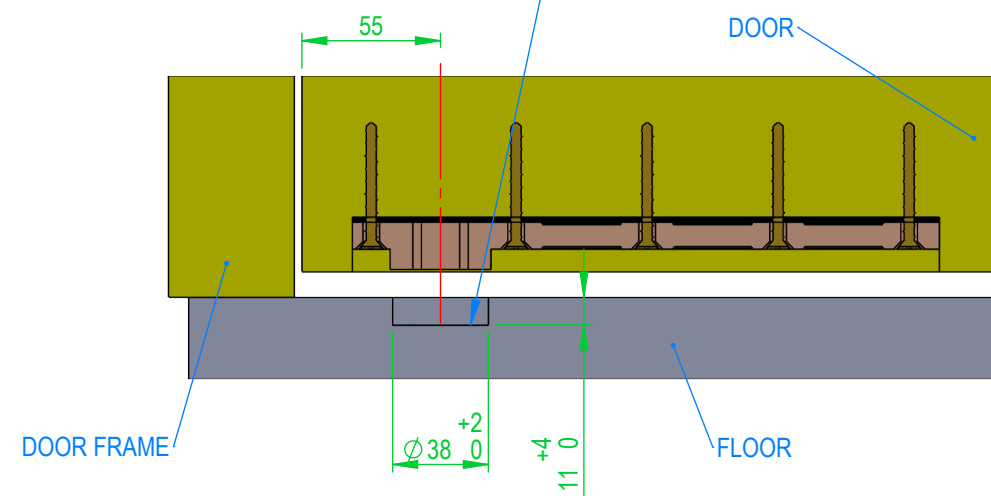
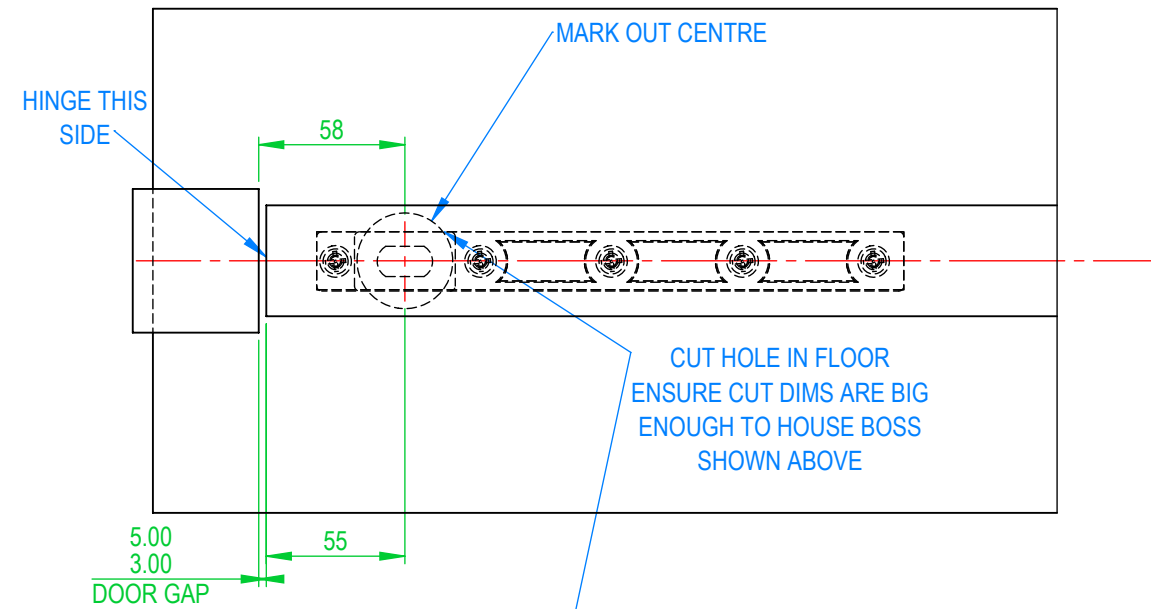
⑩ FITTING CONNECTOR BAR



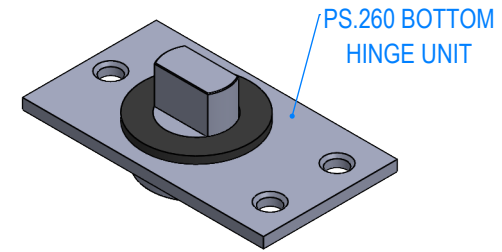
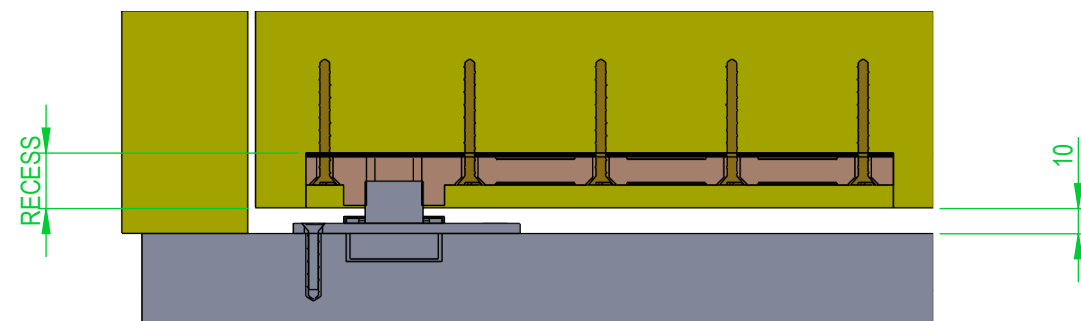


Concealed Closer Single Action
ITS11204 With PS.190 And PS.260

⑪ MARKING OUT FLOOR AND CUTTING RECESS TO ACCEPT PS.260 UNIT

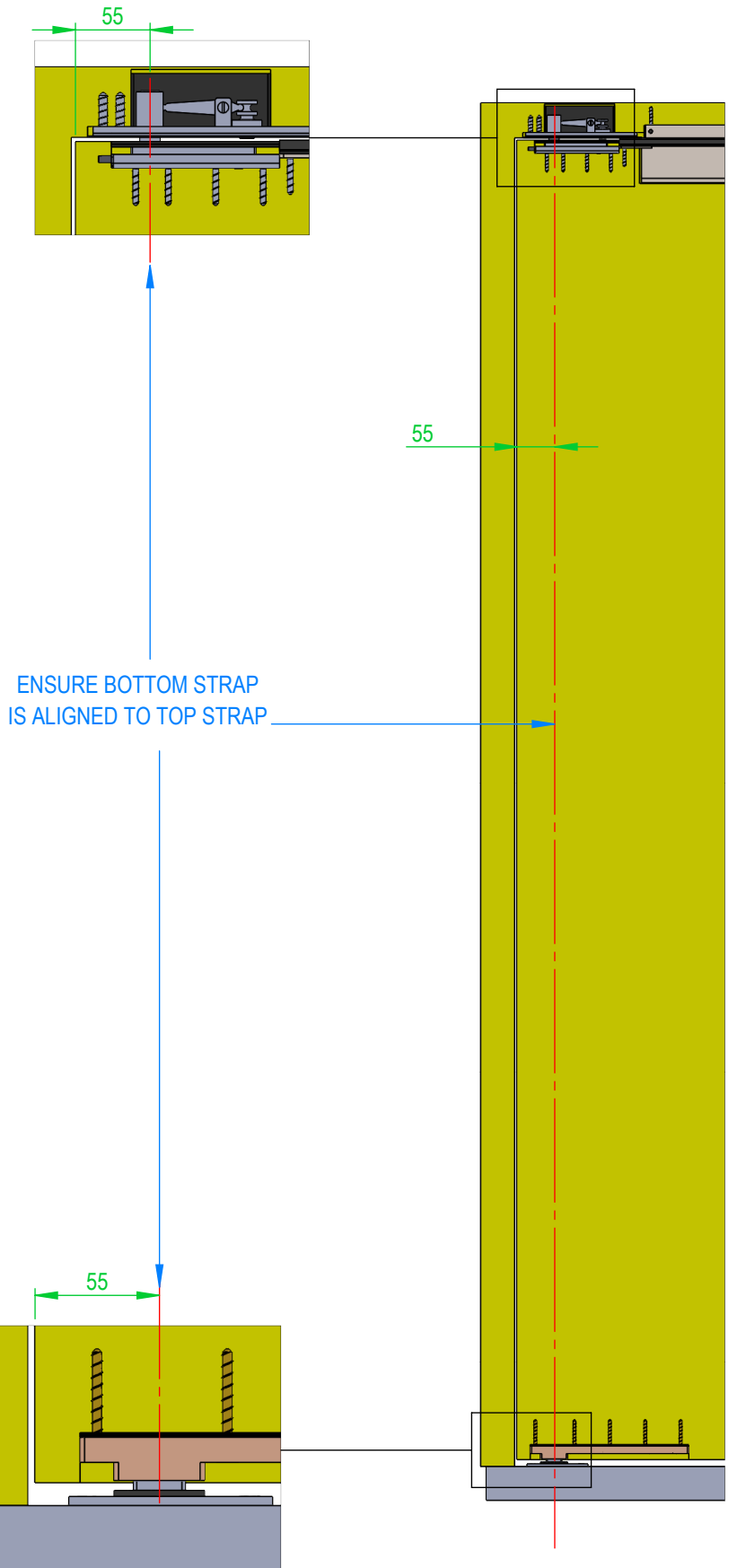


⑫ DOOR GAP SETTING OPTION 1 - 10mm FLUSH (AS SHOWN)
OPTION 2 - ADD 7mm EXTRA DEPTH TO RECESS WILL RESULT
IN DOOR GAP OF 3mm FROM 10mm



FIX PS.260 USING
METHOD SUGGESTED
BY YOUR FIXING
SPECIALISTS

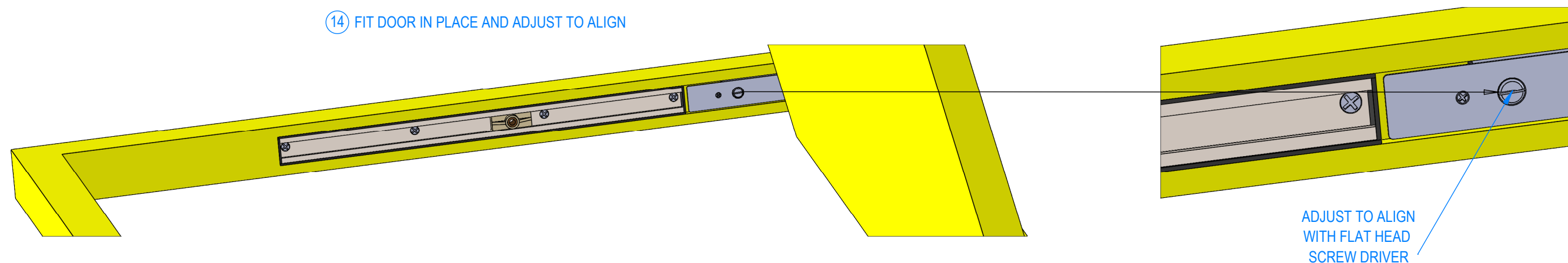
⑬ BOTTOM TO TOP STRAP ALIGNMENT





Concealed Closer Single Action
ITS11204 With PS.190 And PS.260

⑭ FIT DOOR IN PLACE AND ADJUST TO ALIGN



⑮ FITTING RETAINING BAR

OPEN DOOR AND FIT RETAINING BAR

