



# Concealed Closer - ITS.11204

## Fitting Instruction

TEL: +44 (0) 1246 261 491 | [www.rutlanduk.co.uk](http://www.rutlanduk.co.uk)

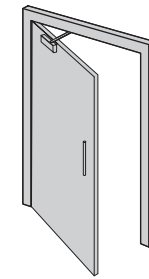


Operations and  
Maintenance Manual



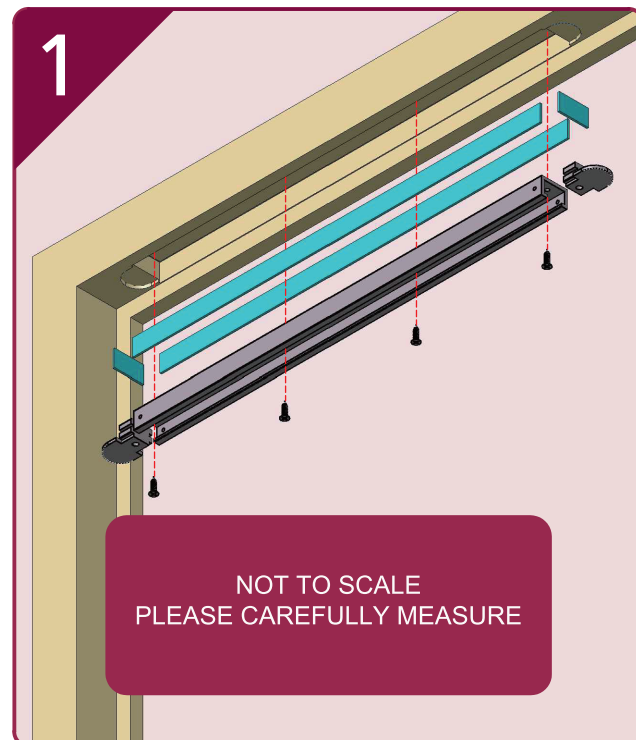
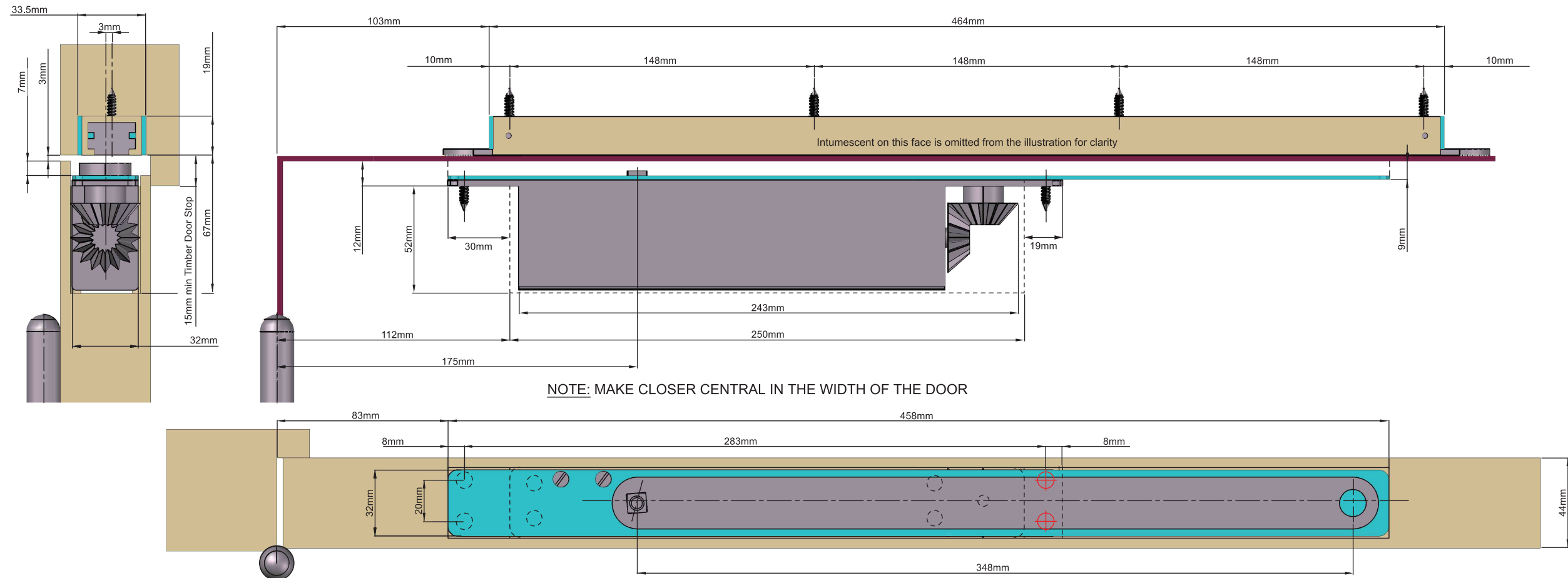
BS EN 1154

3 8 2 1 1 3

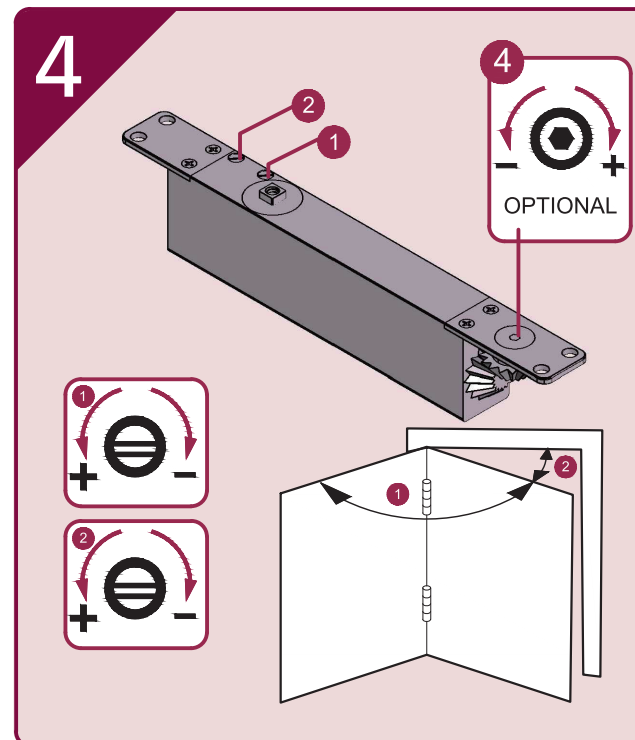
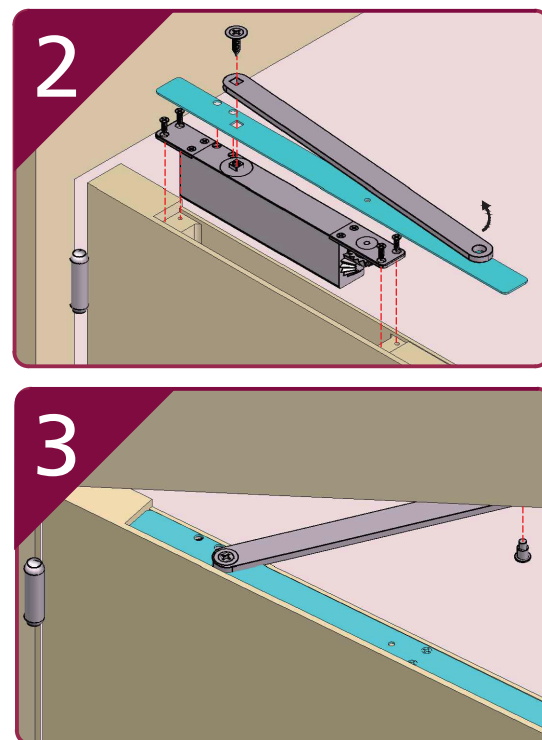


### Fire Doors

Use in conjunction with the  
IP.114 Intumescent kit +  
Fitting Instruction



NOT TO SCALE  
PLEASE CAREFULLY MEASURE



### Size 2-4 Power Adjustment

No. of turns	Size	Max. door width	Max. opening angle	Max weight
-4	2"	850mm	110°	45
*0	3	950mm	110°	60
+6	4	1100mm	110°	80

\*FACTORY PRE-SET  
■ - EN2 NOT SUITABLE FOR FIRE DOOR

IMPORTANT NOTES:  
THE PINION BOLT MUST BE TIGHTENED TO 12Nm.

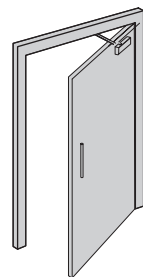
A MECHANICAL DOOR CLOSER IS NOT DESIGNED TO OVERCOME POOR FITTING, EXCESSIVE AIR PRESSURES OR BINDING SMOKE AND WEATHER SEALS. EXCESSIVE AIR PRESSURES CAN BE CREATED BY THROUGH DRAFT, BY AIR CONDITIONING, BY SMALL ROOMS WITHOUT VENTILATION, OR WHERE NO AIR TRANSFERS GRILLS ARE FITTED. MECHANICAL DOOR CLOSERS ARE DESIGNED TO CLOSE THE STATED AND TESTED SPECIFICATION OF DOOR WEIGHT AND DOORSETS/DOOR ASSEMBLIES WHEN DOORS ARE FITTED WITH CORRECT GAPS AND NOT BINDING ON SEALS. IF YOU ENCOUNTER PROBLEMS WITH DOORS NOT CLOSING PLEASE WATCH OUR "6 WAYS TO TROUBLESHOOT A DOOR CLOSER" VIDEO ONLINE. WHERE DOORS ARE NOT CLOSING DUE TO AIR PRESSURES THEN PROFESSIONAL ADVICE FROM AN AUTHORISED INSTALLER IS RECOMMENDED TO FIT TESTED AND THIRD PARTY CERTIFIED AIR TRANSFER GRILLS AND/OR AUTOMATIC DOOR OPERATORS. NOTE: BC VALVES ARE DESIGNED TO ASSIST BACK-CHECK AND DO NOT REPLACE THE REQUIREMENT FOR CORRECTLY FITTED DOORSTOPS OR SAFETY BARRIERS.

FURTHER WARRANTY INFORMATION: <https://www.rutlanduk.co.uk/rutland-warranty>

THE PINION BOLT MUST BE TIGHTENED TO 12NM  
FIRE DOORS MUST BE FITTED WITH INTUMESCENT GASKETS

Fire Doors

Use in conjunction with the  
IP.114 Intumescent kit +  
Fitting Instruction

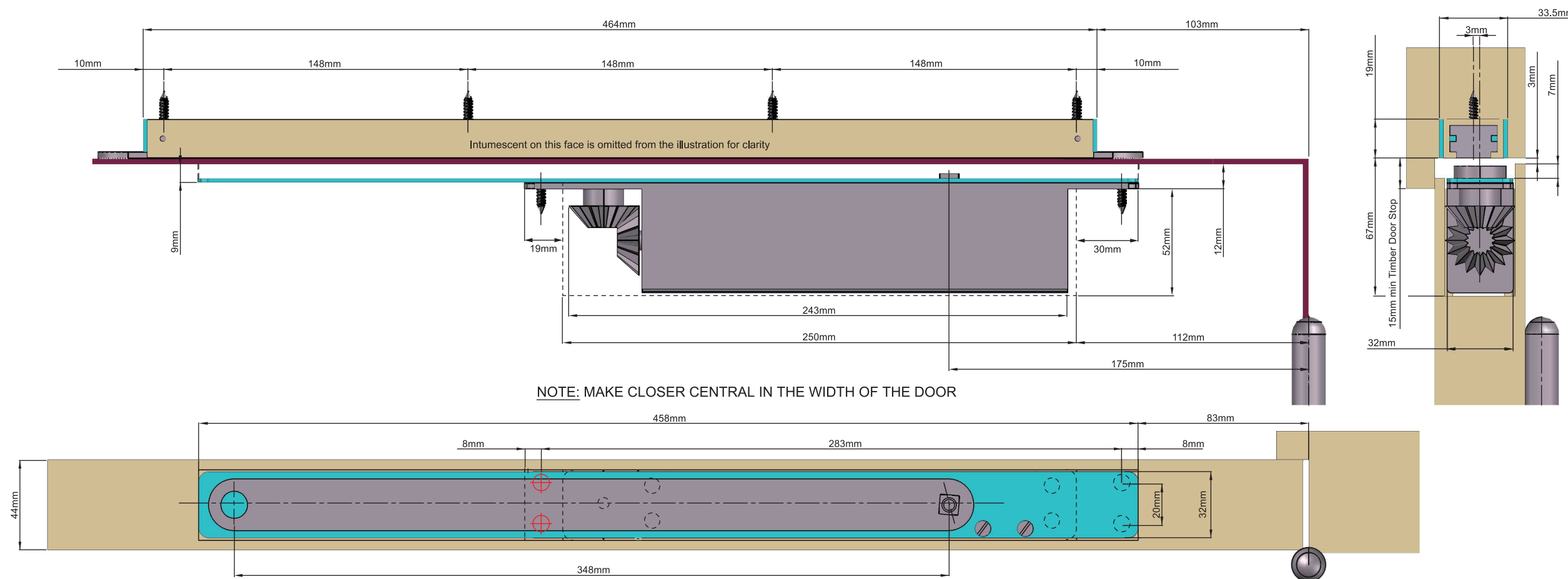
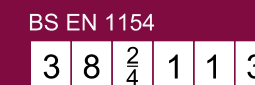
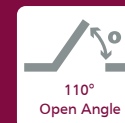


# Concealed Closer - ITS.11204 Fitting Instruction

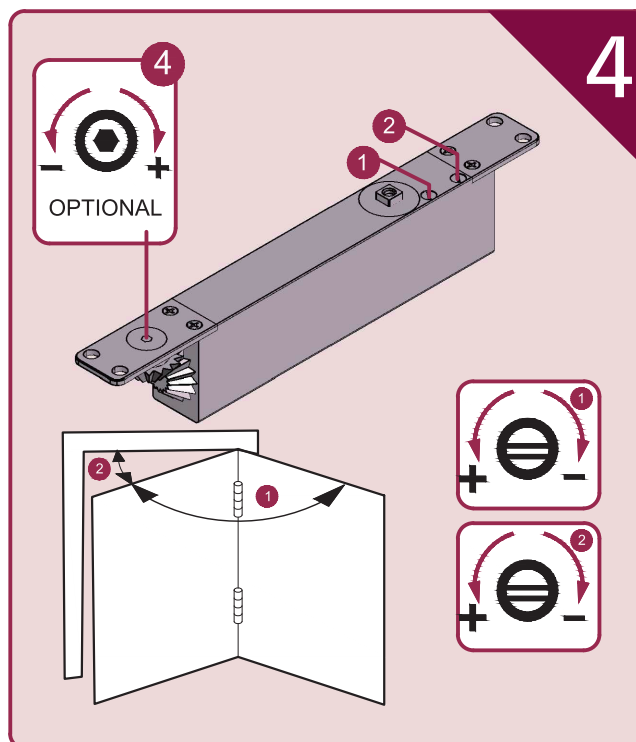
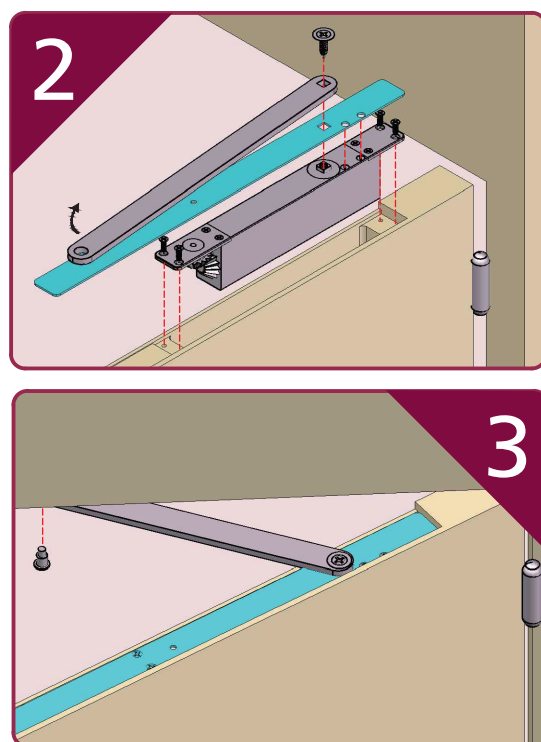
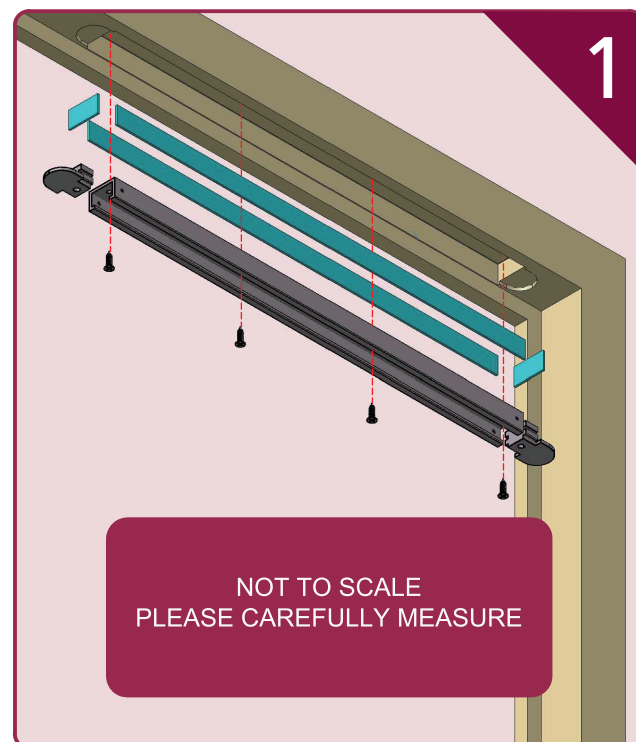
TEL: +44 (0) 1246 261 491 | [www.rutlanduk.co.uk](http://www.rutlanduk.co.uk)



Operations and  
Maintenance Manual



NOTE: MAKE CLOSER CENTRAL IN THE WIDTH OF THE DOOR



### Size 2-4 Power Adjustment

No. of turns	Size	Max. door width	Max. opening angle	Max weight
-4	2"	850mm	110°	45
*0	3	950mm	110°	60
+6	4	1100mm	110°	80

\*FACTORY PRE-SET  
■ - EN2 NOT SUITABLE FOR FIRE DOOR

IMPORTANT NOTES:  
THE PINION BOLT MUST BE TIGHTENED TO 12Nm.

A MECHANICAL DOOR CLOSER IS NOT DESIGNED TO OVERCOME POOR FITTING, EXCESSIVE AIR PRESSURES OR BINDING SMOKE AND WEATHER SEALS. EXCESSIVE AIR PRESSURES CAN BE CREATED BY THROUGH DRAFT, BY AIR CONDITIONING, BY SMALL ROOMS WITHOUT VENTILATION, OR WHERE NO AIR TRANSFERS GRILLS ARE FITTED. MECHANICAL DOOR CLOSERS ARE DESIGNED TO CLOSE THE STATED AND TESTED SPECIFICATION OF DOOR WEIGHT AND DOORSETS/DOOR ASSEMBLIES WHEN DOORS ARE FITTED WITH CORRECT GAPS AND NOT BINDING ON SEALS. IF YOU ENCOUNTER PROBLEMS WITH DOORS NOT CLOSING PLEASE WATCH OUR "6 WAYS TO TROUBLESHOOT A DOOR CLOSER" VIDEO ONLINE. WHERE DOORS ARE NOT CLOSING DUE TO AIR PRESSURES THEN PROFESSIONAL ADVICE FROM AN AUTHORISED INSTALLER IS RECOMMENDED TO FIT TESTED AND THIRD PARTY CERTIFIED AIR TRANSFER GRILLS AND/OR AUTOMATIC DOOR OPERATORS.

NOTE: BC VALVES ARE DESIGNED TO ASSIST BACK-CHECK AND DO NOT REPLACE THE REQUIREMENT FOR CORRECTLY FITTED DOORSTOPS OR SAFETY BARRIERS.

FURTHER WARRANTY INFORMATION: <https://www.rutlanduk.co.uk/rutland-warranty>

THE PINION BOLT MUST BE TIGHTENED TO 12NM  
FIRE DOORS MUST BE FITTED WITH INTUMESCENT GASKETS